



Securing Residential Properties

Residential property investors expect only the highest standard when it comes to security systems and protection. Looking for bespoke solutions that will provide both quality and longevity while also exemplify its surrounding. **ievo** Ltd can offer the most competitive and competent biometric products on the market that use innovative and intelligent technology that will not only guarantee protection, but offer sustainable solutions to reduce costs and time efficiency.

SECURING HOMES

Securing residential properties often requires bespoke solutions tailored to a clients set expectations. With a strong empathise on quality, reliability and accuracy within a criteria, it is essential that security systems can be sensitively installed within properties with ease.

Whether it be a single building private residence, a private estate, or a gated community, **ievo** Ltd offers a product range that can not only be tailored to the requirements of your project, but offers easy installation due to its seamless integration with the vast majority of access control security systems available (including; Paxton, PAC Stanley, Honeywell, ACT and Nortech).

Giving a property a biometric lead access control system provides for a highly quality of security that will provide peace of mind for your clients, they will be safe in the knowledge that only they will be able to access their property or provide permissions for those they wish to permit.

INTELLIGENT, YET SIMPLE AND COST EFFECTIVE

Through **ievo**'s innovative technology you are assured that full protection a premises or property is achieved. Only the most innovative and competitive components are used to manufacture **ievo** products, creating unique features that is not found in other fingerprint readers.

ievo products have been designed to drive down costs and increase practicality. With integration options to either new or existing access control solutions, increasing a properties security measures do not necessarily mean re-installation, therefore reducing costs.

Using simple registration software, either provided by **ievo** or your access control provider, your clients can easily register themselves onto a system and manage their access. For large estates with staffing requirements, different access rights can be provided to staff for controlled access to private areas of a property. The coming and goings of staff can be recorded via your access control system to give full monitoring over hours worked for HR/payroll requirements.

This level of security allows for the owner to have full control over their property.

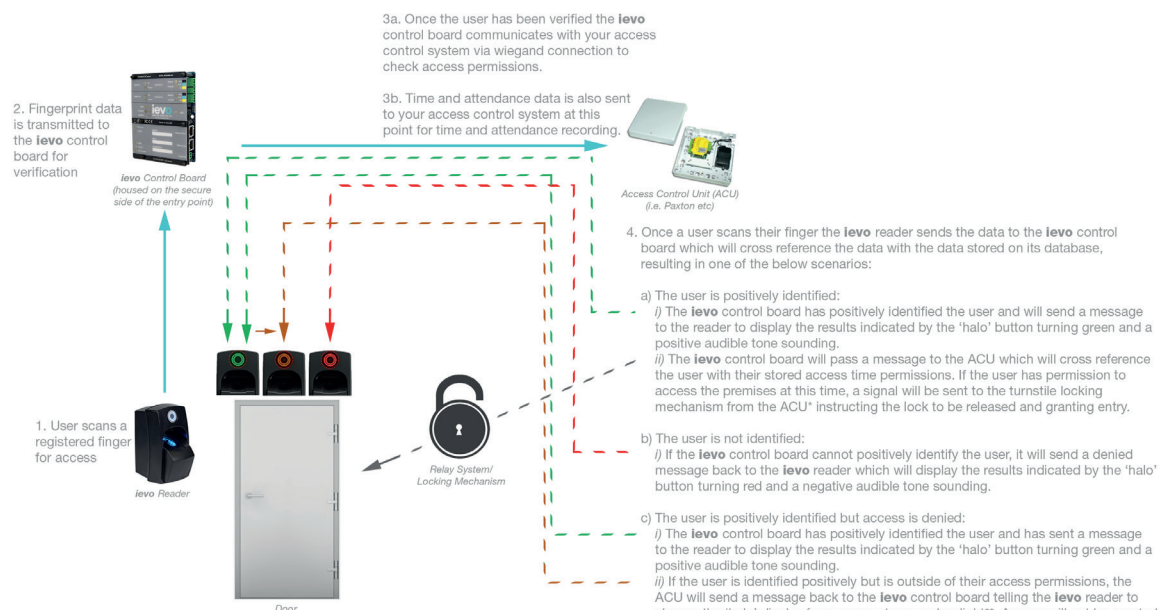
PROVIDING PEACE OF MIND

The benefits of a biometric access control system over the conventional lock and key, or PIN access gate, is providing a higher state of security. Systems relying on secondary credentials to allow access (i.e. keys, PINS, or pass cards), are vulnerable to the credentials being lost, stolen or shared. Stolen or lost credentials leaves security measures exposed to whomever holds the 'key', additionally there is a cost to replace this for the user. With biometrics this issue is removed, providing satisfaction that only a resident will have access to the property.

INTERNAL & EXTERNAL SOLUTIONS

The **ievo** product range offers solutions for both internal and external requirements. The **ievo** ultimate™ fingerprint reader, was designed as a fully functional biometric reader, it withstands use in harsh external environments (i.e. heavy rain, to up -20° temperatures, and is vandal resistant), and is ideal for private property use. With multiple connection options, the *ultimate* can be installed remotely on a gated entry point, or on an external property wall connecting via PoE. Not only flexibly when it comes to connections, but the *ultimate* is highly accurate and reliable due to the internal scanning systems of the device. At **ievo** we are confident that the *ultimate* will meet the requirements of any private residential use.

The **ievo** micro™ is an internal only device, designed for use within 'clean' environments, it offers the same reliability and accuracy of the *ultimate*, but is specifically designed to cater for those wanting an internal only solution which can be used for private areas, safes and protected storage or just adding a secondary level of internal security to a property.



* Ievo readers do not control the locking mechanism, the signal comes from the ACU
** This is an optional function from the ACU installer



RELIABLE. BIOMETRIC. SOLUTIONS.

KEY BENEFITS OF IEVO SYSTEMS

- Safe and secure environment for your property
- Additional layer of security
- Cost effective
- Integrated system to work with your infrastructure
- Software integration opportunities available
- Future proof design - for any future upgrading or additional development of your security system
- Full customisable and serviceable up to and after the point of sale
- Customisable colours to discreetly blend into your environments.



ievo Ltd is a leading design and manufacturer of biometric fingerprint readers. Working with installers and integrators, **ievo** Ltd have a proven track record securing residential properties across the globe.

For case studies or further information, please contact our support team:

info@ievoreader.com

Tel: 0845 643 6632 / +44 (0) 191 296 3623

or visit:

www.ievoreader.com