

# RELIABLE. BIOMETRIC. SOLUTIONS.

## Contents:

---

Introduction	3
Fingerprint Readers	4
<b>ievo</b> Control Boards	6
Modular Components	7
<b>ievo</b> Registration Units	8
<b>ievo</b> Enclosed Power Supply Units	9
Additional Components	10

# Introduction

## ievo Ltd Product Guide

The **ievo** Ltd product guide outlines the range of products currently available.

**ievo** Ltd manufacturer and supply a range of different products to help build the right solution for different requirements. With modular components available **ievo** systems are fully customisable and serviceable up to and after the point of sale.

All product installation manuals and software can be accessed and downloaded from the **ievo** website's technical support page:

[www.ievoreader.com/support](http://www.ievoreader.com/support)

The screenshot shows the ievo website's support page. At the top, there is a navigation bar with links: HOME, ABOUT US, PRODUCTS, CASE STUDIES, SUPPORT, NEWS, and CONTACT US. The 'SUPPORT' link is highlighted. Below the navigation bar, there is a dropdown menu for 'Specifiers and Consultants' with options: Technical, Marketing, and Biometrics Explained. The 'Technical' option is selected. Below this, there is a section titled 'SOFTWARE DOWNLOADS'. It contains a paragraph: 'Choose the Revision of ievo equipment you are installing, along with the access control system you are integrating into and any extras and we'll provide a list of downloads in the order of which they need installing, if you're unsure or have any questions, feel free to contact us on the information above.' Below this paragraph, there are three dropdown menus: 'ievo Control Board Version' (REV4 (Grey Front)), 'Access Control Supplier (if applicable)' (None Applicable), and 'USB Registration Unit (if applicable)' (None Applicable). There are also input fields for 'Company' and 'Email', and a 'Confirm that you are not a bot' checkbox. A 'Submit' button is at the bottom of the form. Below the form, there is a section titled 'MANUALS AND DOCUMENTATION'. It contains a paragraph: 'ievo manuals and installation guides can be downloaded using the drop down box below.' Below this paragraph, there is a dropdown menu for 'Manuals and Documentation' (REV3 Installation Guides) and a 'SUBMIT' button.

Navigate the options and submit your request, the files will appear shortly after in the order in which they should be installed. You will also receive an email with the files for future reference and convenience.

# Fingerprint Reader: **ievo** ultimate™



## Key Features:

- 1:N matching up to 50,000 fingerprint templates via the **ievo** control board (10,000 option comes as standard)
- Designed for external and internal use
- IP65 rated for harsh environmental deployment
- Multispectral imaging sensor
- Data transmission AES (128bit) encryption can be enabled
- Secure template storage on a separate **ievo** control board
- Wiegand, clock & data and TCP/IP outputs
- Activated by capacitive proximity detection
- LED and audio indications
- Anti-tamper and vandal resistant
- Seamless integration with large number of existing access control systems
- Built in environmental controls; heater and humidity sensor for external use
- Spoof detection functionality can be enabled
- Approved for UK Government use by the CPNI

The **ievo** ultimate requires an **ievo** control board (sold separately) to function.  
More information: [www.ievoreader.com/ultimate](http://www.ievoreader.com/ultimate)

### **ievo** ultimate: Biometric Only

(includes all cables & surface mount components)



Sales Code:  
**RD-UR**

### **ievo** ultimate: Biometric & Card\*\*

(includes all cables & surface mount components)



Sales Code:  
**RD-UR-CD**

### **ievo** ultimate: Casing Shell

(Excludes Sensor)



Sales Code:  
**REP-UR-CASE**

### **ievo** ultimate: Surface Mount Kit



Sales Code:  
**SUND-ULT-SURF**

### **ievo** ultimate\*: Flush Mount Kit

(includes all screws and fixtures)



Sales Code:  
**SUND-ULT-FLUSH**

# Fingerprint Reader: **ievo micro**<sup>TM</sup>

## Key Features:



- 1:N matching up to 50,000 fingerprint templates via the **ievo** control board (10,000 option comes as standard)
- Designed for internal use only
- Powerful optical imaging sensor
- Data transmission AES (128bit) encryption can be enabled
- Secure template storage on a separate **ievo** control board
- Activated by capacitive proximity detection
- LED and audio indications
- Anti-tamper protocols
- Seamless integration with large number of existing access control systems
- Simple installation procedure
- Easy to operate

The **ievo micro** requires an **ievo** control board (sold separately) to function.  
More information: [www.ievoreader.com/micro](http://www.ievoreader.com/micro)

### **ievo micro:** *Biometric Only*

(Includes all cables & installation components)



Sales Code:  
**RD-MR**

### **ievo micro:** *Biometric & Card\*\**

(Includes all cables & installation components)



Sales Code:  
**RD-MR-CD**

### **ievo micro:** *Casing Shell*

(Excludes Sensor)



Sales Code:  
**REP-MR-CASE**

### **ievo micro\*:** *Flush Mount Kit*

(includes all screws and fixtures)



Sales Code:  
**SUND-MIC-FLUSH**

\*ievo reader sold separately

\*\*Please check that the card reader module is compatible with your identification cards via our free card checking service at: [www.ievoreader.com/support](http://www.ievoreader.com/support)



[www.ievoreader.com](http://www.ievoreader.com)

[info@ievoreader.com](mailto:info@ievoreader.com)

+44 (0)191 296 3623

# ievo Control Boards



## Key Features:

- Powerful, dedicated fingerprint matching system for up to 50,000 templates (10,000 option comes as standard)
- Can read from and support up to two connected **ievo** fingerprint reader units
- Dual-channel data output separate wiegand output for each connected **ievo** fingerprint reader unit
- Supports integration for two-door/turnstile access
- 3rd Party product for a wide range of integration options (speak to your account manager for further information)
- Modular design for core components
- AC/DC or PoE power options
- Clear LED indications for instant operational assessment
- Network-out link for one connected access control system
- Simple manageable settings
- Simple installation process
- Flexible integration options available for third party development

The **ievo** control board only works with **ievo** fingerprint reader devices (sold separately).  
More information: [www.ievoreader.com/control-board](http://www.ievoreader.com/control-board)

REV4 Control Board:  
DC Power,  
10k Capacity



Sales Code:  
**CB-MB1-PU-10k**

REV4 Control Board:  
DC Power,  
50k Capacity



Sales Code:  
**CB-MB1-PU-50k**

REV4 Control Board:  
PoE Power,  
10k Capacity



Sales Code:  
**CB-MB1-POE-10k**

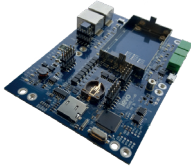
REV4 Control Board:  
PoE Power,  
50k Capacity



Sales Code:  
**CB-MB1-POE-50k**

# Modular Components

Non-populated **ievo**  
Control Board: REV4



Sales Code:  
**MOD-CB-MB1**

**ievo** 12v DC Power  
Module



Sales Code:  
**MOD-PU**

**ievo** PoE Power Module



Sales Code:  
**MOD-PE**

**ievo** Capacity:  
10k Module



Sales Code:  
**MOD-10k**

**ievo** Capacity:  
50k Module



Sales Code:  
**MOD-50k**

**ievo** Card Reader  
Module



Sales Code:  
**MOD-CD**

**ievo ultimate:**  
Sensor only  
(Includes heater mat)



Sales Code:  
**REP-UR-SEN**

**ievo micro:**  
Sensor only  
(Includes sensor cable)



Sales Code:  
**REP-MR-SEN**

**ievo** Reader Head Board  
*(ultimate & micro readers)*



Sales Code:  
**REP-HEADBOARDS**

# ievo Registration Units



## Key Features:

- High Quality & Reliability
- USB powered - no additional power supply require
- Time saving
- Durable high performance use
- Timing placement to image 1.0 Seconds (Typical)
- 500 dpi image resolution
- Requires minimal maintenance
- Ergonomically designed
- Aids training and reduces registration time

More information: [www.ievoreader.com/ievo-registration-units](http://www.ievoreader.com/ievo-registration-units)

### **ievo** ultimate USB Registration Unit



For **ievo ultimate** only systems or mixed systems with both **ievo ultimate** and **micro** fingerprint reader devices.

Sales Code:  
**RD-DESK-U**

### **ievo** micro USB Registration Unit



For **ievo** systems using **ievo micro** fingerprint readers only

Sales Code:  
**RD-DESK-M**



# ievo Enclosed Power Supply Units



## Key Features:

- High Quality & Reliability
- IP65 Rated (using correctly rated cable glands)
- Wide input voltage range (100-240 VAC)
- Class 1 switch mode power supply
- Built-in charging & battery protection circuit
- Internally fused
- Mains & battery charge level indicator
- Isolate from front of enclosure
- Small footprint & integrated rear mounting holes for simple installation
- Simple hinged lid
- 2 years warranty
- CE compliant

More information: [www.ievoreader.com/enclosed-power-supply](http://www.ievoreader.com/enclosed-power-supply)

### Enclosed Power Supply (PSU)



Sales Code:  
**SUND-PSU12-ENC**

### Housing Unit Only



Sales Code:  
**SUND-ENC**

# Additional Components

## ievo REV4 Service Kit:



Incl.  
2x ultimate cases  
1x micro case & back plate  
1x ultimate flush kit  
2x ultimate surface mount brackets  
2x MSI sensors  
1x optical sensor & board

4x SPN connectors  
4x SPN connectors  
4x T20 security screws  
8x ultimate case screws  
24x ultimate backplate screws

Sales Code:  
**SUND-SERKIT-UM**

## ievo Custom Colour Cases: Painted Cases



Required provision of RAL or Pantone Colour code

Sales Code:  
**SUND-CUSTCOL-P**

## ievo Custom Colour Cases: Moulded Cases



Required provision of RAL or Pantone Colour code

Sales Code:  
**SUND-CUSTCOL-M**

## ievo ultimate\* Vandal Resistant Case:



Can be custom coloured with provision of RAL or Pantone Colour code

Sales Code:  
**SUND-COVER-UR-B**

## ievo ultimate\* Sun Visor Case:



Can be custom coloured with provision of RAL or Pantone Colour code

Sales Code:  
**SUND-COVER-US-B**

## ievo micro\* Vandal Resistant Case:



Can be custom coloured with provision of RAL or Pantone Colour code

Sales Code:  
**SUND-COVER-MR-B**

## ievo Two Line Screen (For time and attendance data submission)



Sales Code:  
**SUND-SCREEN-1**

## HID iClass 32k Card: 3004PGGMN (single pack)



Sales Code:  
**SUND-CARD-IC-32K**

## MIFARE® Classic 1k ISO Card: Without Magstripe (pack of 10)



Sales Code:  
**SUND-CARD-MF-1K**

## CISCO Router (Compatible with ievo systems)



Sales Code:  
**SUND-ROUTER-WFN**

## 4 Way PoE Injector



Sales Code:  
**SUND-POE-INJ4W**

## 1 Way PoE Injector



Sales Code:  
**SUND-POE-INJ1W**

\*ievo reader sold separately

## Additional Components Continued...

Wiegand Converter:  
RS485 / RS232 / USB



Sales Code:  
*Wiegand to RS485*  
**SUND-W-485**  
*Wiegand to RS232*  
**SUND-W-232**  
*Wiegand to USB*  
**SUND-W-USB**



**Need additional support?\***

**Contact ievoreader Ltd:**

Monday to Thursday 9am till 5.30pm (GMT)

Friday 9am till 3.30pm (GMT)

Tel: **0845 643 6632** or **+44 (0)191 296 3623**

**info@ievoreader.com**

\*Please note that our offices are closed during national UK bank holiday periods.

**[www.ievoreader.com](http://www.ievoreader.com)**