



## Securing Nurseries

**Statutory requirements: “Under the Children Act 1989, local authorities are required to provide services for children in need for the purposes of safeguarding and promoting their welfare.” - HM Government document ‘Working together to safeguard children’.**

**ievo** Ltd understand the requirements set out by the UK Government and Ofsted in order to protect and safeguard children. In order to protect those in their younger years, **ievo** Ltd provide biometric systems to protect and improve safety measures in nurseries.

## SECURING YOUR ENVIRONMENT

One of the key features of outstanding practice according to Ofsted is: "robust arrangements for site security, understood and applied by staff and pupils". Taking this on board **ievo** Ltd understand that nurseries need to protect children and staff members and offer parents piece of mind that their children are safe in a protected environment while out of their care.

**ievo** Ltd biometric solutions provide a safe and secure environment by utilising fingerprint recognition technology to govern access. As fingerprints are developed as an individual grows, children of a young age\* may not process enough identifiable data points on their fingerprint to use such a system, therefore **ievo** systems are recommended to be used to control access for staff members and parents, ensuring that only those who are registered are allowed access. The control access system will provide a safe and secure environment for safeguard younger children in the early years of education and development.

## INNOVATIVE TECHNOLOGY

High levels of security are a vital concern to parents and can be a deciding factor when choosing a nursery or childcare centre, likewise knowing which system to install is vital for staff to understand. **ievo**'s innovative technology seamlessly integrates into new or existing security systems allowing for flexibility in installation.

When registering a fingerprint with **ievo** devices, the reader will send an image of the fingerprint to an **ievo** control board where an advanced algorithm will extract and convert key data using a unique proprietary template format which is then stored in a database on the control board. The template can then be used for identification purposes when using the system, which will only grant access to registered users, protecting and securing those within. The original fingerprint image is not stored or recorded and no data is stored on the **ievo** reader unit.

## ACCESS CONTROL

Controlled security is paramount in providing a safe environment for children and staff. Knowing who has access and when is vital in maintaining a safety net. Biometric identification supports a high level of security and **ievo** fingerprint readers are designed to integrate into access control systems by adding an additional layer of security to an infrastructure.

## SYSTEM INTEGRATION

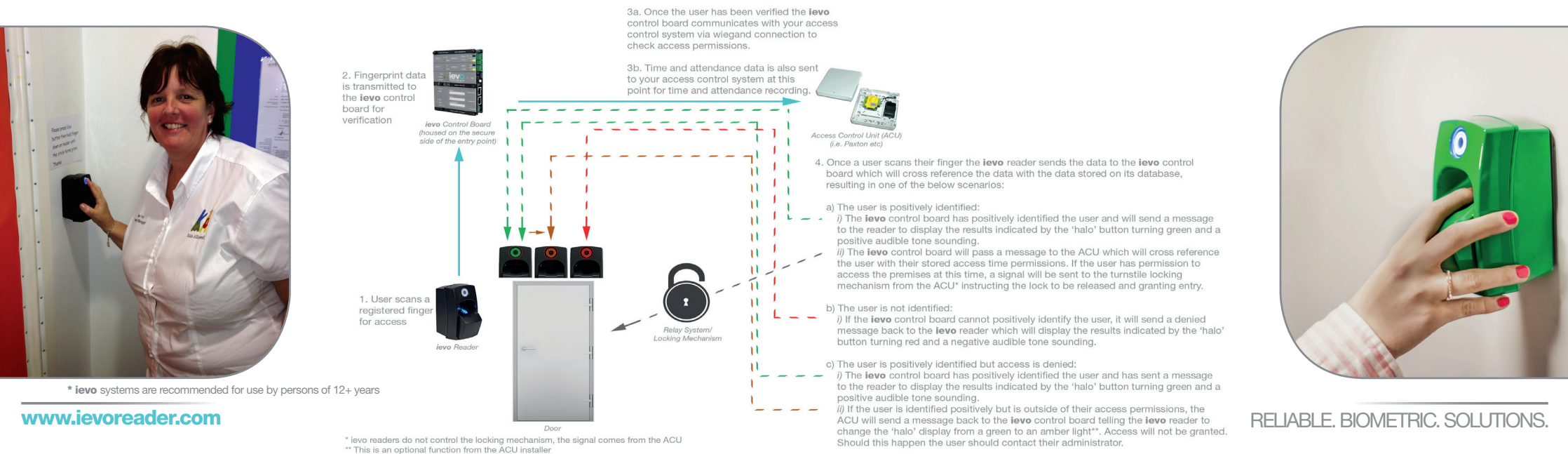
**ievo** systems work with a number of well-known access control systems, including; Paxton, Stanley, Honeywell and Nortech, to adhere to the Ofsted mission of safeguarding children. The seamless integration allows for interaction between systems, improving safety measures and reducing costs for installation.

## CONTROLLED ACCESS

**ievo**'s biometric readers removes any potential vulnerabilities of card, fobs/token systems, by giving control back to the system. Only a registered fingerprints will be able to access the facility. To be in line with best practice however, **ievo** solutions can be installed with a card reader function which will accept some card systems, allowing dual access for staff or parents who do not wish to use biometric data, but still safeguarding them under the same security measures.

## BESPOKE SOLUTIONS: IEVO PRODUCTS

**ievo** biometric readers can be installed in a variety of ways, with either just main entrance points with one reader, or a system of multiple readers installed throughout a facility. Systems can be installed with a mix of **ievo** biometric readers within one system. Different access rights can be given to different users via an access control system, allowing, for example, only staff to access staff only areas, e.g. supply rooms or facility management areas. Aside for the technical aspects of **ievo** devices, the **ievo** readers can be provided in custom colours, ensuring that your systems blends in with your environment.



\* **ievo** systems are recommended for use by persons of 12+ years

RELIABLE. BIOMETRIC. SOLUTIONS.

## KEY BENEFITS OF IEVO SYSTEMS

- Safeguarding children, staff and parents
- Simple and highly effective solutions
- Cost effective
- Improved health and safety records
- Integrated system to work with your infrastructure
- Future proof design - for any future upgrading or additional development of your security system
- Full customisable and serviceable up to and after the point of sale
- Customisable colours to discreetly blend into your environment



**ievo** Ltd is a leading design and manufacturer of biometric fingerprint readers. Working with a number of installers and integrators, **ievo** Ltd have a proven track record securing food and drink manufacturing facilities worldwide.

*For case studies or further information, please contact our support team:*

***info@ievoreader.com***

***Tel: 0845 643 6632 / +44 (0) 191 296 3623***

*or visit:*

***www.ievoreader.com***