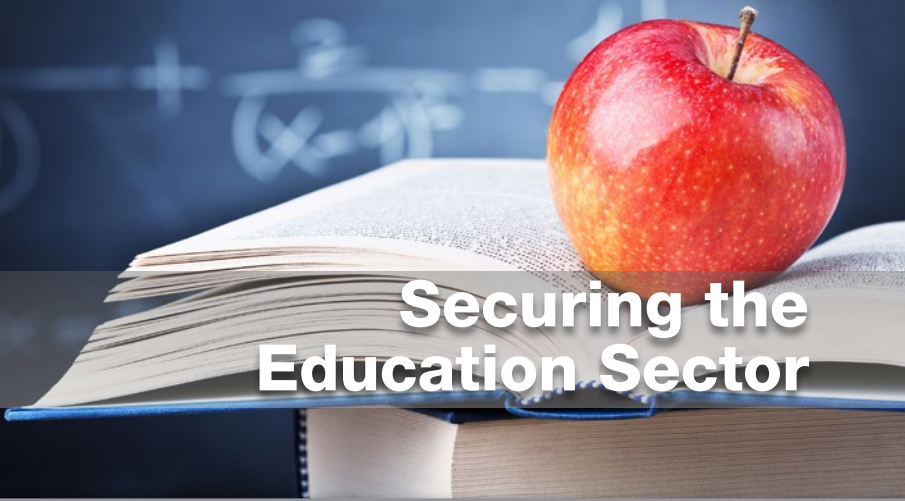




Security solutions
as individual as you are.™



Securing the Education Sector

“There can be no issue of greater importance to parents and carers, or to schools, than the safety of their children” – Ofsted.

Regulated by Ofsted standards, the educational sector and its employees have an overarching responsibility to safeguard and promote the welfare of children and young people, providing a safe and secure environment in which to learn and develop. **ievo** Ltd understand this and by emphasising best practice in their biometric solutions are proven to deliver efficient and simple systems that can be relied upon to help safeguard pupils.

SECURING YOUR ENVIRONMENT

One of the key features of outstanding practice according to Ofsted is: "robust arrangements for site security, understood and applied by staff and pupils". Taking this on board **ievo** Ltd understand that educational facilities need to protect pupils, teachers, and other staff members whilst offering parents a piece of mind that their children are safe in a protected environment with simple but effective solutions. **ievo** fingerprint recognition systems work by scanning data points that form the fingerprint. These data points are scanned from the surface and subsurface levels of the skin, **ievo** are unique in using this method. **ievo** Ltd work with fingerprint biometric data to ensure a deeper level of security that applies authentication and access only to those who have the required permissions, creating an effective, safe and secure environment for pupils and staff. As a child grows their fingerprints become more developed, as such younger ages may not be able to present a fingerprint with enough data points to be identified, with this in mind we recommend that **ievo** systems are used by children of 12+ years. Unsurprisingly there are individuals who naturally have 'problem fingerprints' (meaning not enough data points can be identify for positive identification), in these cases registering the thumbs, or scanning a finger from multiple angles can help resolve issues, but by no means will they eliminate higher error rates with problem fingerprints

INNOVATIVE TECHNOLOGY

Biometric fingerprinting has many advantages to help secure the safeguarding of children, protecting both a facility and its users. **ievo**'s innovative technology seamlessly integrates into new or existing security systems allows for flexibility in installation. When registering a fingerprint with **ievo**, advanced sensors and algorithms are used to scan and collect the required biometric data to create a '2D digital wire frame' of the data, which is stored for identification purposes. This will only grant access to registered users, protecting and securing those within.

ACCESS CONTROL

Controlled security is paramount in providing a safe environment for pupils, teachers and staff to work in. Knowing who has access to what and when is vital in maintaining a safety net. Biometric identification supports a high level of security and **ievo** devices are designed to integrate into access control systems by adding an additional layer of security to an infrastructure. **ievo** systems work with a number of well-known access control systems, including; Paxton, Stanley, Honeywell and Nortech, to adhere to the Ofsted mission of safeguarding children and young people.

SOFTWARE INTEGRATION

ievo solutions also provide software integration options. Being able to use the access control device to help monitor and record attendance for pupils, staff and visitors can provide vital information for attendance registering, child protection, health and safety and overall HR information.

DATA PROTECTION

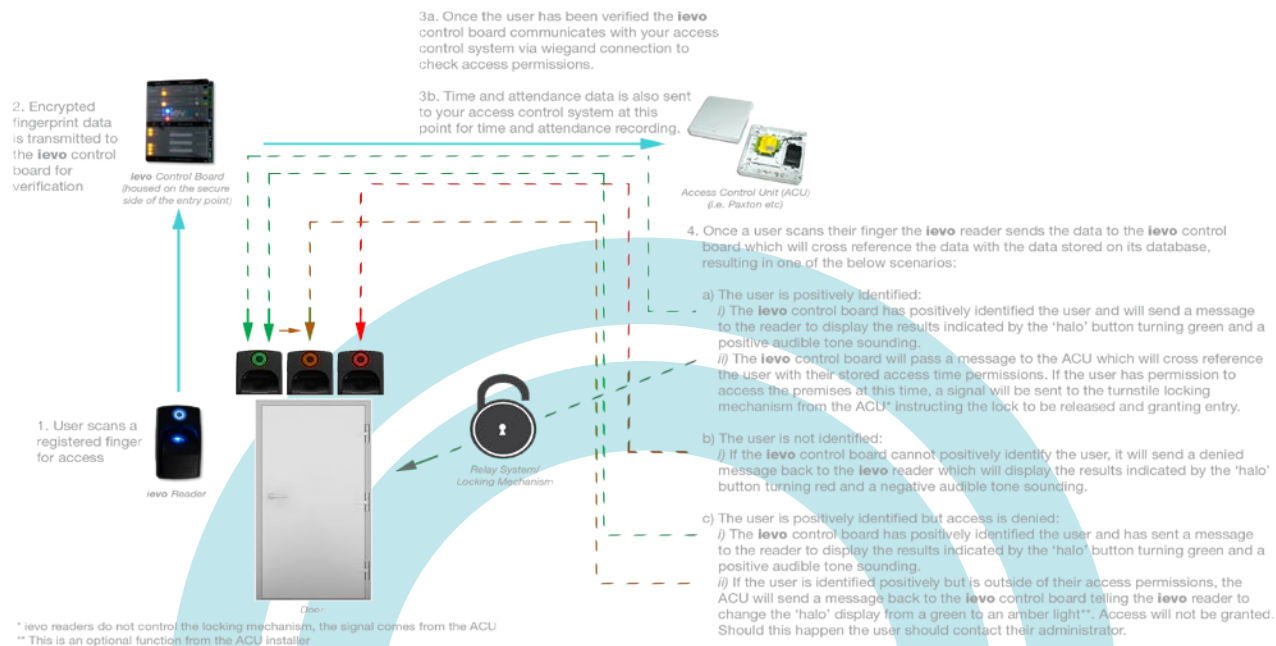
No fingerprint images are stored or collected, protecting a user's identity. Once a fingerprint has been registered the '2D digital wire frame' or data, is assigned to the users' profile and when using a fingerprint reader for access, the system will cross reference a scanned fingerprint with all stored '2D digital wire frames' until a match is found and identification is complete. Due to the nature of our data capture methods we do not contravene any data protection or human rights laws. Once a pupil leaves the school or no longer requires access to the facility, the stored encrypted data is simply deleted from the system.

CONTROLLED ACCESS

ievo's biometric readers removes any potential vulnerabilities of card, fobs/token systems, by giving control back to the system. Only a registered fingerprints will be able to access the facility. To be in line with best practice however, **ievo** solutions can be installed with a card reader function which will accept some card systems, allowing dual access for children or parents who do not wish to use biometric data, but still safeguarding them under the same security measures.

BESPOKE SOLUTIONS: IEVO PRODUCTS

ievo biometric readers can be installed in a variety of ways, with either just main entrance points with one reader, or a system of multiple readers installed throughout a facility. Systems can be installed with a mix of **ievo** biometric readers within one system. Different access rights can be given to different users, allowing, for example, only staff to access staff only areas, e.g. supply rooms or facility management areas.



KEY BENEFITS OF IEVO SYSTEMS

- Safeguarding pupils and staff
- Cost effective
- Accurate data capture for attendance records
- Improved health and safety records
- Integrated system to work with your infrastructure
- Software integration opportunities available
- Future proof design - for any future upgrading or additional development of your security system
- Full customisable and serviceable up to and after the point of sale
- Customisable colours to discreetly blend into your environment



ievo Ltd is a leading design and manufacturer of biometric fingerprint readers. Working with a number of installers and integrators, **ievo** Ltd have a proven track record securing educational facilities worldwide.

For case studies or further information, please contact our support team:

info@ievoreader.com

Tel: 0845 643 6632 / +44 (0) 191 296 3623

or visit:

www.ievoreader.com