



Security solutions  
as individual as you are.™



# Securing Manufacturing & Industrial Infrastructures

Busy environments within the industrial and manufacturing industry requires efficiency throughout the workplace including a robust security system offering balance of safety, reliability and accuracy. Time and attendance becomes vital in ensuring protection for the workforce and can greatly benefit HR and health and safety protocols by demonstrating a higher level of due diligence. **ievo** Ltd take all of this into account to offer unparalleled biometric solutions.

## SECURING YOUR ENVIRONMENT

The industrial manufacturing industry can often require unique security systems; with both access control and time and attendance management to help combat contamination and provide clean environments. It is fairly common within the industry to have a multi-tiered security infrastructure which allows different employees access to different areas within a facility, ensuring that health and safety measures are adhered to. **ievo** Ltd work with fingerprint biometric data to ensure a deeper level of security that applies both authentication and access only to those who have the required permissions, creating an effective, safe and secure environment for all employees.

## EFFICIENT ACCESS CONTROL

Controlled security is paramount in providing a safe environment for health and safety conscious companies, and also protecting assets, equipment and staff. Knowing who has access to what and when is vital in maintaining a safety net. Access control lead by biometric identification supports a high level of security and **ievo** provide adaptable devices that meet most security infrastructure requirements. **ievo** fingerprint scanners are designed to integrate into access control systems, adding biometrics to provide an advanced layer of security to the infrastructure. **ievo** works with a number of well-known access control systems, including; Paxton, Stanley, Honeywell and Nortech.

Many facilities using proximity detection systems, such as card readers or fobs/tokens have discovered the pitfalls of such systems, whereby access is controlled by whoever has the key, rather than control being governed by the system. **ievo**'s biometric readers eliminates this vulnerability, by giving control back to the system, only a person with a registered fingerprint will be able to access the facility, thus increasing the security and control over the environment.

## EFFICIENT TIME AND ATTENDANCE MANAGEMENT

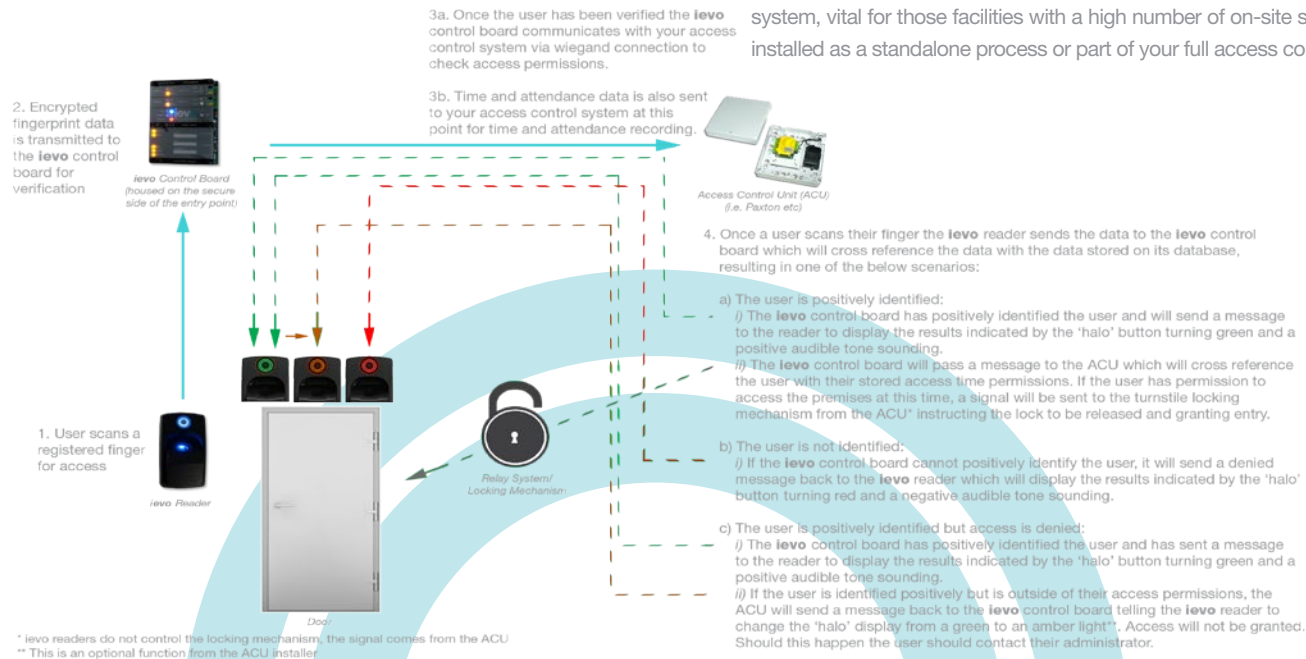
Time and attendance is an abundant yet intricate function which works seamlessly alongside biometrics. **ievo** fingerprint recognition readers can be integrated into time and attendance software which can be set to record time and date information of an individual's scan when clocking in and out. The data is sent to the access control system providing accurate information for HR, payroll and health and safety use. The method of using biometrics helps to erase 'buddy punching' issues and pay disputes, due to the reliability of the data captured and the fact that a user would have to be physically present to scan their finger. **ievo** devices employ an advanced process, scanning from both the surface and subsurface layers of the skin to give a higher quality of data for authentication.

## HARSH ENVIRONMENT USE










**ievo** products have been designed specifically to work in fast paced, harsh environments, where employees may have dirt or debris on the skin. Using an advanced sensor, **ievo**'s flagship reader the **ievo ultimate™**, uses multispectral imaging to enable data capture through levels of debris which may be present on the skin, this includes levels of moisture, dust, dirt, and some latex gloves. Please turn over to see the multispectral imaging chart.

## BESPOKE SOLUTIONS: IEVO PRODUCTS

**ievo** biometric solutions can be installed in a variety of ways, with either the main entrance points secured with one reader, or a series of devices installed throughout a facility where multiple doors or entry points require different levels of access control. You can mix and match fingerprint scanners within one system, using the robust **ievo ultimate** reader for internal or external use and the **ievo micro™** reader which is perfect for internal only settings. Depending on the access control system employed, different access rights can be given to users, allowing for further control over all working area. **ievo** can also be integrated into most time and attendance software allowing you to employ a reliable and accurate data management system, vital for those facilities with a high number of on-site staff and varying shift patterns, this can be installed as a standalone process or part of your full access control solution.



### Multispectral Imaging: Fingerprint image quality conditions

Fingerprint Conditions:	Condition A: Dry	Condition B: Moist	Condition C: Dirty	Condition D: Elderly	Condition E: High levels of ambient light
					
Other Biometric Readers			NO IMAGE		NO IMAGE

### KEY BENEFITS OF IEVO SYSTEMS

- Additional layer of security for your facility
- Full access control monitoring over your facility
- Accurate clock in and out data capture
- Reliable identification for users
- Removal of 'buddy punching' issues
- Cost effective
- No reoccurring costs for replacement cards or fobs
- Improved health and safety records
- Safe and secure environment for your employees
- Integrated system to work with your infrastructure
- Future proof design - for any future upgrading or additional development of your security system
- Full customisable and serviceable up to and after the point of sale



**ievo** Ltd is a leading design and manufacturer of biometric fingerprint readers. Working with a number of installers and integrators, **ievo** Ltd have a proven track record securing manufacturing facilities worldwide.

*For case studies or further information, please contact our support team:*

**[info@ievoreader.com](mailto:info@ievoreader.com)**

**Tel: 0845 643 6632 / +44 (0) 191 296 3623**

*or visit:*

**[www.ievoreader.com](http://www.ievoreader.com)**